

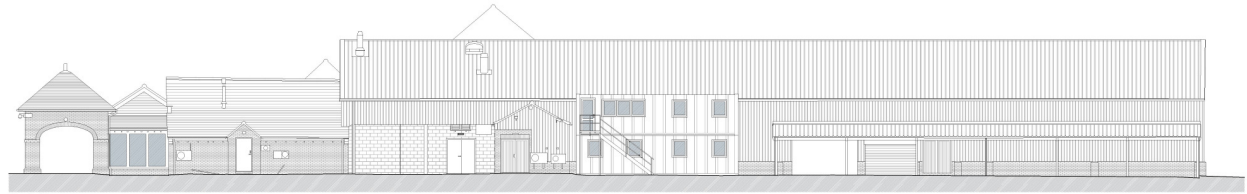
© Wildblood Macdonald Architects. All rights reserved. No part of this document may be reproduced, stored in a retrieval system, or transmitted in any form or by any means, electronic, mechanical, photocopying, recording, or by any information storage and retrieval system, without the prior written permission of Wildblood Macdonald Architects.



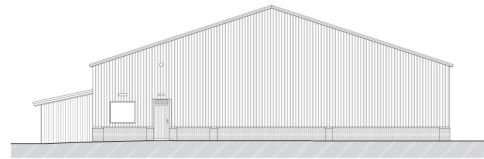
Elevation A



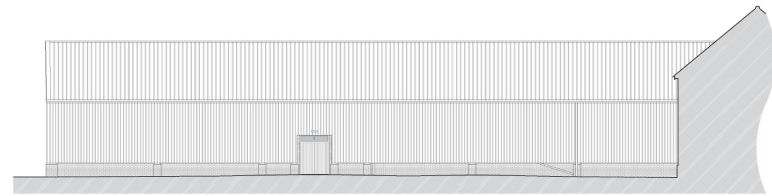
Elevation B



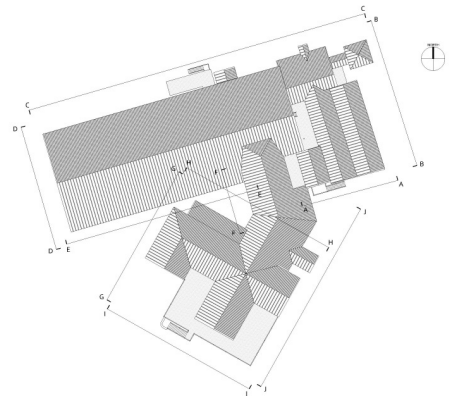
Elevation C



Elevation D



Elevation E



**wildblood macdonald**  
 Parkhill Studio, Parkhill, Wetherby Road  
 Wetherby, LS23 7JZ  
 T: 01937 542500 F: 01937 542501  
 www.wildblood-macdonald.com

DATE VALID: 03/04/2018

THIS COPY HAS BEEN MADE BY OR WITH THE AUTHORITY OF RYedale DISTRICT COUNCIL PURSUANT TO SECTION 41 OF THE COPYRIGHT DESIGN AND PATENTS ACT 1988. UNLESS THAT ACT PROVIDES A RELEVANT EXCEPTION TO COPYRIGHT, THIS COPY MUST NOT BE COPIED WITHOUT THE PRIOR PERMISSION OF THE COPYRIGHT OWNER.

Client	Project	Rev.	Description	Rev.	Date
Sandburn York Ltd.	New Hotel & Staff Accommodation Sandburn Hall Flaxton	2454	Existing Elevations as 1:200 @ A4	1	
				2	
				3	
				4	
				5	
				6	
				7	
				8	
				9	
				10	
				11	
				12	
				13	
				14	
				15	
				16	
				17	
				18	
				19	
				20	
				21	
				22	
				23	
				24	
				25	
				26	
				27	
				28	
				29	
				30	
				31	
				32	
				33	
				34	
				35	
				36	
				37	
				38	
				39	
				40	
				41	
				42	
				43	
				44	
				45	
				46	
				47	
				48	
				49	
				50	
				51	
				52	
				53	
				54	
				55	
				56	
				57	
				58	
				59	
				60	
				61	
				62	
				63	
				64	
				65	
				66	
				67	
				68	
				69	
				70	
				71	
				72	
				73	
				74	
				75	
				76	
				77	
				78	
				79	
				80	
				81	
				82	
				83	
				84	
				85	
				86	
				87	
				88	
				89	
				90	
				91	
				92	
				93	
				94	
				95	
				96	
				97	
				98	
				99	
				100	